



# 13.26

# RTM



#### MAIN SECTORS



INDUSTRY



CONSTRUCTION

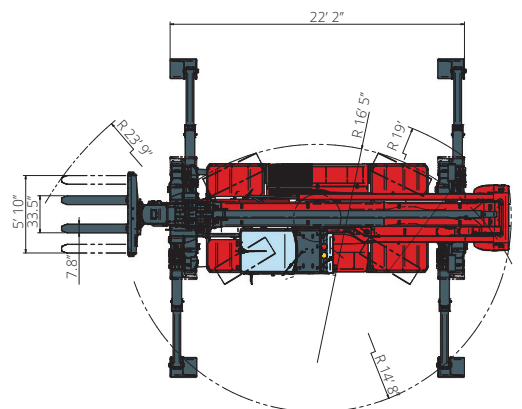
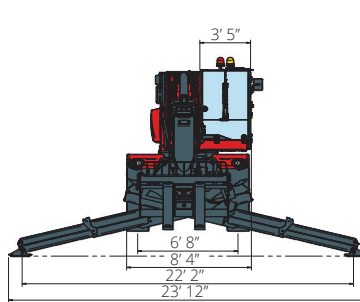
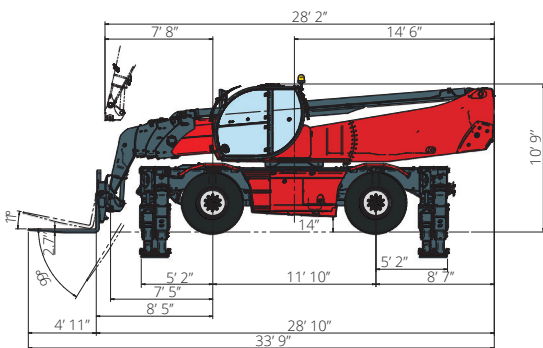


FEATURED PROJECTS

Maximum lifting height: 85' 11"  
Maximum reach: 69' 10"  
Electronically controlled hydrostatic transmission  
Automatic leveling device  
Scissors stabilizers

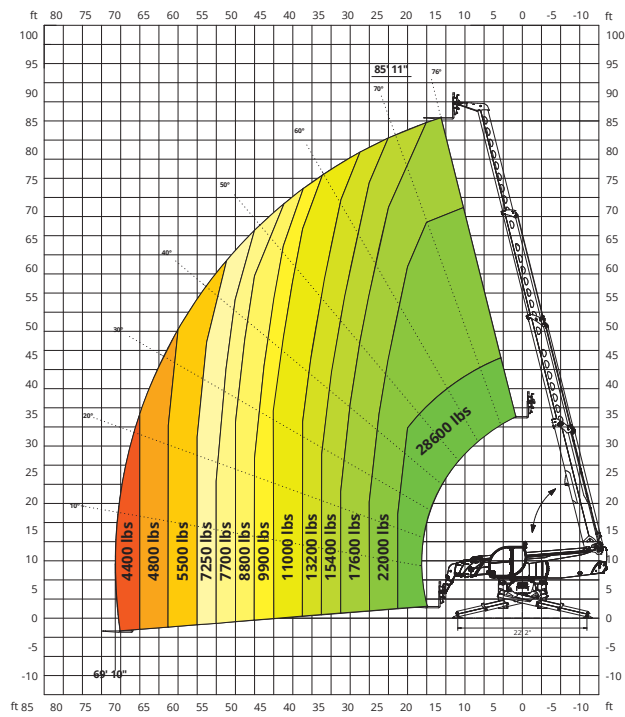
MACHINE MODEL	Rotating telescopic handler	RTH 13.26
	Maximum lifting capacity	28,600 lbs (center of gravity 24 in)
	Maximum lifting height	85' 11'
	Rotation	360° (continuous)
ENGINE	Type	<b>Volvo TAD 572 VE Tier 4f</b>
	Rated power	160 kW (218 hp) @ 2,300 rpm
	Maximum torque	910 Nm @ 1,410 rpm
	Displacement	1.35 US gal
	Cylinders	4 in line
	Engine configuration	Turbocharged direct injection diesel
TRANSMISSION	Cooling system	Water - intercooler
	Type	Hydrostatic
	Model	Danfoss / Rexroth
	Maximum pressure	480 bar
	Displacements	Electronically controlled variable displacement pump Variable displacement motor
AXLES AND BRAKES	Gear box	Dropbox, 2 speeds forward-reverse
	Type	Axles with planetary gearboxes
	Rear axle	Steering and oscillating with hydraulic locking
	Front axle	Steering and oscillating and with levelling +/-8°
	Service brake	Hydraulically operated wet multi-disk brakes on each axle
	Parking brake	Hydraulic with negative action
PERFORMANCE	Tyres dimensions	17,5 R25
	Max. travel speed	15 Mph
	Drawbar pull	152 kN
	Gradeability	50%
WEIGHTS	Turning radius (end of forks)	285 in
	Total unladen	67,460 lbs
	Front axle unladen (boom retracted and lowered)	23,370 lbs
TANK AND SYSTEM CAPACITIES	Rear axle unladen (boom retracted and lowered)	44,060 lbs
	Fuel tank	62.1 US gal
	AdBlue	10.6 US gal
	Hydraulic oil tank	79.2 US gal
	Engine oil tank	4.2 US gal
HYDRAULIC CIRCUIT FOR MOVEMENTS	Cooling liquid	10.6 US gal
	Max. operating system pressure	350 bar
	Circuit type	Load sensing
	Service pump	Danfoss / Rexroth - Variable displacement
	Controls for boom and turret movements	Danfoss - SIL 2 electro-proportional valve
	Controls for stabilizers	Bosch Rexroth - Electro-hydraulics controls
STANDARDS MET	Movements control	2 no. two-axis Danfoss joysticks with deadman safety device - Managed via CAN bus
	EN 1459-2: concerning standards for slewing variable-reach trucks EN 13000: concerning standards for hydraulic cranes EN 280: concerning standards for mobile elevating work platforms FOPS/ROPS EU 2016/1628: concerning engine emissions standards	

The data in this brochure are informative and subject to change without notice



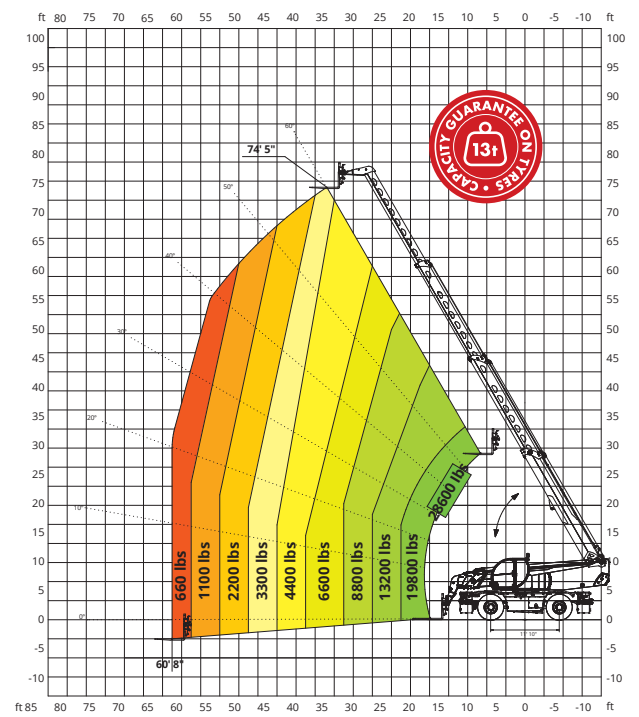
# ON STABILIZERS

## 360° LOAD CHART ON FULLY EXTENDED STABILIZERS



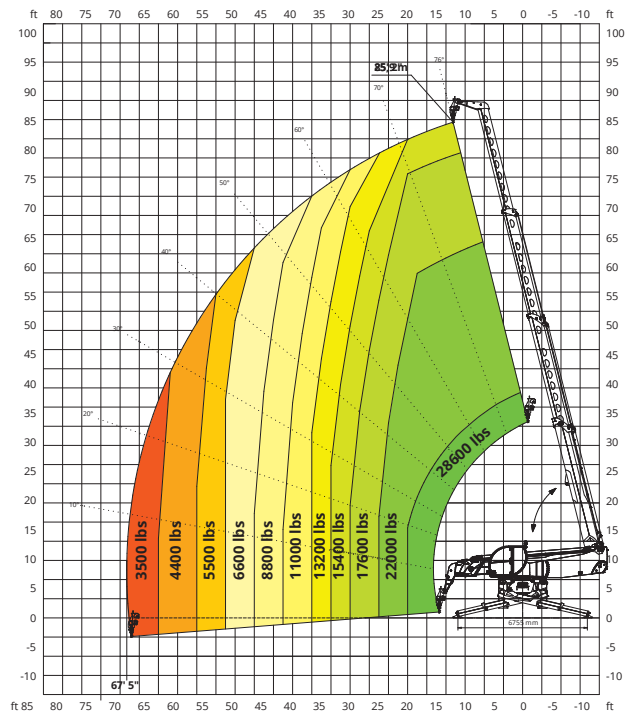
# ON TIRES

## FRONT LOAD CHART ON TIRES



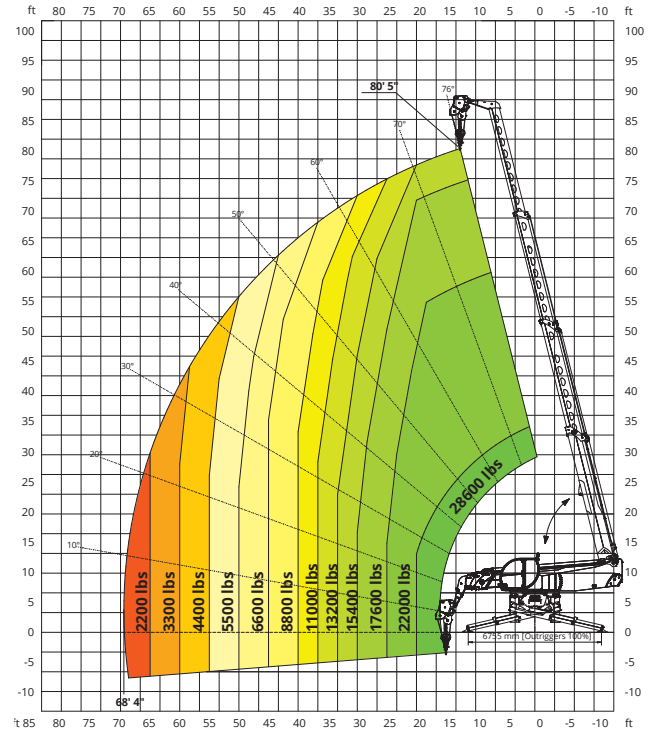
# H13

## HOOK 28,600 lbs



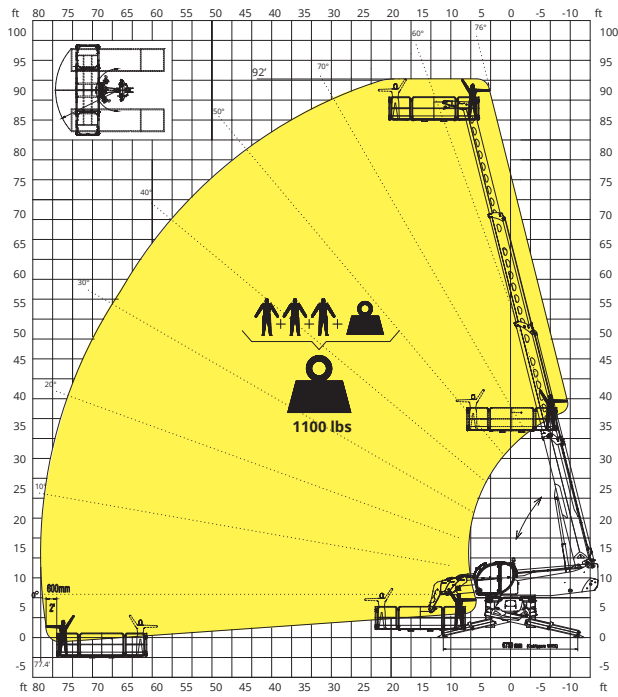
# W13

## WINCH 28,600 lbs



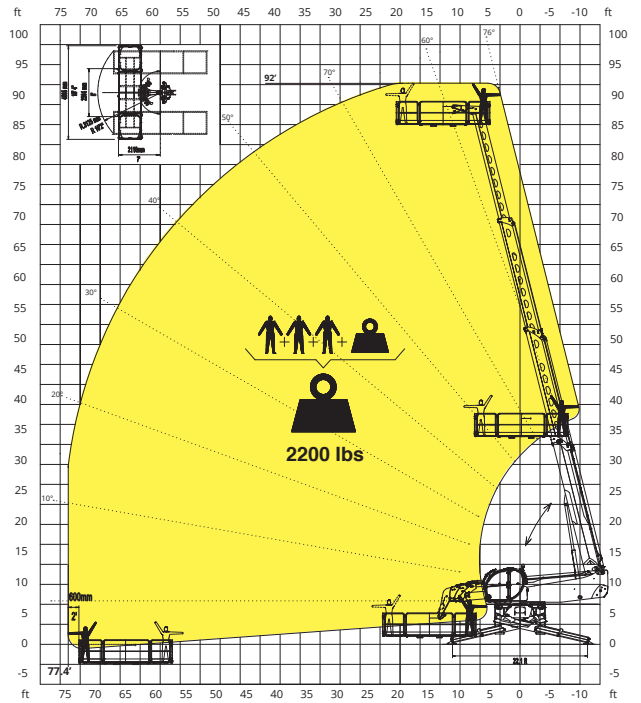
REP 2-4,5

ROTATING EXTENDABLE BASKET **1,100 lbs**



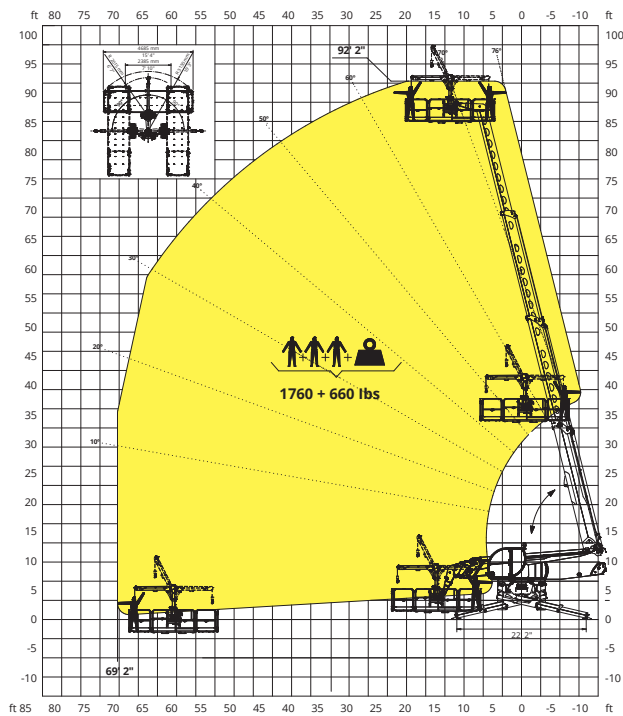
REP 10.2-4,7

ROTATING EXTENDABLE BASKET **2,200 lbs**



REP 8.2-4,7 W0,3

BASKET 15.4 ft **1,760 lbs**  
WITH WINCH **660 lbs**



RPRAB10-3,5

ROTATING EXTENDABLE BASKET **2,200 lbs**  
FOR ASBESTOS

